



CINCHSEAL CELEBRATES OUR  
**25<sup>th</sup> ANNIVERSARY**

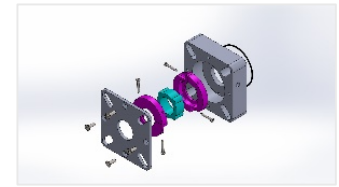
**25**  
YEARS

## CinchSeal Pharmaceutical Solution Overview

For over 25 years, CinchSeal has been a global leader in manufacturing innovative rotary shaft seals that provide complete bearing and shaft protection on screw conveyors, ribbon blenders, mixers, and all types of bulk-processing equipment.

In highly regulated **pharmaceutical environments**, CinchSeal products bring reliability and safety. Our rotary shaft seals eliminate the need to replace processing equipment as they solve problems associated with traditional lip seals and mechanical packing: prevent bearing failure, shaft damage, product leakage and loss, frequent cleaning, and unscheduled downtime and maintenance.

We serve world's top companies in every processing industry, ranging from food and beverage, pulp & paper, feed & grain, industrial, chemical, pharmaceutical, goldmine, cement, and others.



### Value Proposition

#### Maximize Uptime

- Prevent product leaks, frequent repairs, and unscheduled downtime

#### Increase ROI

- Protect bearings and shafts from failure and damage and stop product loss due to leakage

#### Minimize Maintenance

- Take advantage of the split seal design and spend less time cleaning – without the need to take apart your processing equipment

#### Improve Productivity

- Keep your employees productive and operations running efficiently and smoothly

#### Reduce contamination risk

- Prevent cross-contamination, foreign material migration, and product recalls

### Customer Pain Points

- Gearbox failure and frequent oil changes and replacement
- Shaft repairs
- Contamination risk
- Product loss
- Frequent maintenance
- No adequate housekeeping
- Safety concerns
- Unscheduled downtime

### Type of Equipment

- Mixers and Blenders
- Ribbon Blenders
- Paddle Mixers
- Bucket Elevators
- Drive End Gear Reducers
- Extruders
- Rotary Air Valves
- Screw Conveyors
- Weight & Measure

### BEFORE



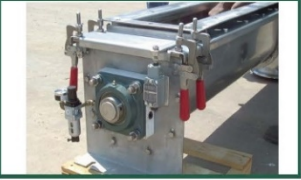

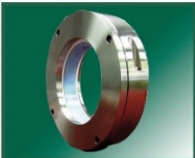


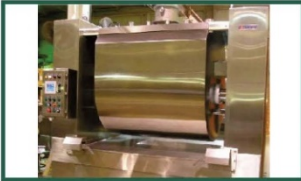

### AFTER





CINCHSEAL CELEBRATES OUR  
**25<sup>th</sup> ANNIVERSARY**

**25**  
YEARS

	<ul style="list-style-type: none"><li>• Cement and Gypsum</li><li>• Metal Powders</li><li>• Grain and Ethanol</li><li>• Sugar</li><li>• Mining</li></ul>	7550 
	<ul style="list-style-type: none"><li>• Lime</li><li>• Chemical Processing</li><li>• Salt</li><li>• Spices</li><li>• Rendering</li></ul>	7800 
	<ul style="list-style-type: none"><li>• Food Processing</li><li>• Spices &amp; Flavorings</li><li>• Cheese &amp; Dairy</li><li>• Pet Foods</li><li>• Chemical Processing</li><li>• Chocolate</li></ul>	9700 
	<ul style="list-style-type: none"><li>• TIO2</li><li>• Salt/Sugar</li><li>• Plastics</li><li>• Variety of Powders</li></ul>	Rotary Air Lock Seal 
	<ul style="list-style-type: none"><li>• Bakery</li><li>• Bread</li><li>• Cookies</li><li>• Crackers</li></ul>	9700 
	<ul style="list-style-type: none"><li>• Meat Processing</li><li>• Poultry</li><li>• Meat Rendering</li></ul>	9100 