

# Rotary Shaft Seals

Innovative · Effective · Reliable

# Table of Contents

---

About CinchSeal..... 1

The CinchSeal Team..... 2

Equipment..... 3

Industries..... 4

CinchSeal Design & Advantages..... 5

Product Catalog..... 6-11

Contact Us..... 12

# About CinchSeal

---

CinchSeal Rotary Shaft Seals has been serving the industrial processing industry for nearly 30 years. We aim to create the ideal solution that perfectly aligns with unique requirements, ensuring utmost satisfaction and fostering long-lasting partnerships. At our core, our vision is to cater to the demanding requirements of our industry by delivering custom and standard seals that possess exceptional durability, capable of withstanding high temperatures, rapid speeds, and abrasive materials.

Driven by our dedication to meet the demands of a complex processing market, our team is committed to surpassing expectations and providing exceptional service to every customer.

**UNITED STATES**

HEADQUARTERS

**5000+**

SUCCESSFUL  
CUSTOM SEALS

**66**

GLOBAL COUNTRIES

**8,000+**

SATISFIED CUSTOMERS

**29**

YEARS IN BUSINESS

**81**

OEM PARTNERS



# The CinchSeal Team

---



## Engineering & Design

Our design team conducts product and market research to establish how CinchSeal can meet the needs of the material processing industry. Each customer works closely with this team to ensure any special needs or requests are fulfilled.

## Production

Our skilled & dedicated production team produces our seals from start to finish. The team is trained to work with high-end materials. After creating each seal, the team conducts a 100% quality assurance inspection, which guarantees a reliable and effective seal to each of our clients.



## Sales & Service

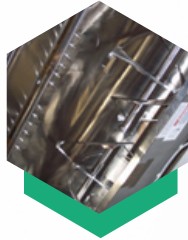
We pride ourselves on ensuring we understand your needs and preferences to offer tailored solutions. Whether you're making a purchase decision or need after-sales support, our team is here to ensure a smooth, pleasant, and beneficial experience for you.

# Equipment Compatability



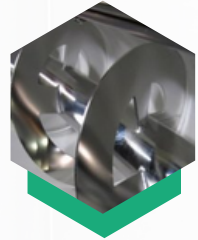
## Mixers

Ploughshare Mixers  
Ribbon Mixers  
Paddle Mixers



## Blenders

Ribbon Blenders



## Conveyors

Incline Screw Conveyors  
Horizontal Screw Conveyors  
Vertical Screw Conveyors



## Bucket Elevators



## Rotary Air Valves



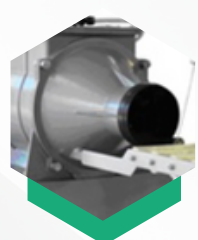
## Extruders



## Dryers



## Cookers



## Pug Mills

[Learn More About Equipment We Work With](#)



# Industries We Serve

Our sealing technology serves various applications and OEM industries such as:

## Food Processing

Baking	Feed & Grain
Beverage	Powder Supplements
Chocolate	Infant Formulas
Dairy Products	Meat & Poultry
Ethanol	Pet Food

## Industrial Metal & Aggregate

## Cement & Gypsum

## Cosmetics

## Chemicals

## Lithium-Ion Battery

## Gold & Mining

## Pharmaceutical

## Pulp & Paper

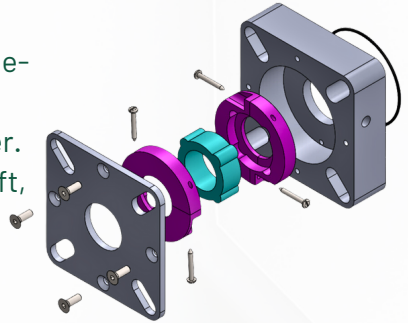
## Vitamin & Supplement

## Wastewater Treatment



# Our Innovative Design

Our seals are crafted for superior performance, ensuring leak and contamination prevention, minimal maintenance, and extended durability. Every seal comprises a robust housing and a three-component internal assembly that includes two smooth-gliding rotor cups and a supple elastomer. These components are securely fitted to the shaft, allowing them to revolve with it. This dynamic movement significantly diminishes the typical wear and damage to the shaft that is often seen with static seals such as lip seals and packing ropes. [Click Here to See How Our Seals Work](#)



## CinchSeal Advantages



### Cost Savings

Eliminates product waste, unscheduled maintenance costs and downtime, premature bearing failure, shaft damage, and reduces energy consumption



### No Shaft Damage

CinchSeal's unique design protects rotating shafts from being scored or damaged



### Run-Out

Can handle up to 1/4" [6.35mm] shaft run-out without losing a seal on a shaft



### Health & Safety

Prevents powder and dust leakages that can cause hazardous work environments and explosions



### Split Design

Allows for hygienic clean-up between product batches



### Proven ROI

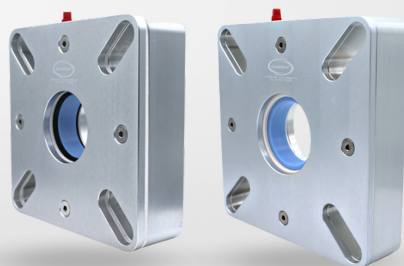
Switching to CinchSeal shows and immediate ROI by eliminating product leakage and reducing maintenance cost





## 7500 Series

**Maintenance Free &  
Self-Adjusting Seals**



## About the Seals

Our 7500 Series CEma rotary shaft seals are designed for zero maintenance due to their unique self-adjusting design. These seals are ideal for industrial screw conveyors, bucket elevators, and similar bulk solid applications.

The 7500 Series consumes 30% less power than packing seals, and will not undercut shafts. Fully assembled and possessing a rugged modular design, our 7500 Series industrial seals will not leak due to foul bearings or contaminate processing areas.

### Suitable Materials

Powders  
Metals  
Slurries  
Plastics  
Sludges  
Food Processing

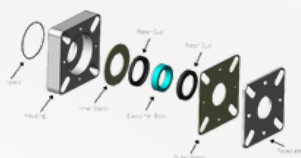
### Equipment Compatibility

Mixers  
Conveyors  
Blenders  
Cookers  
Agitators  
Rotating Equipment

### Specifications

**Maximum Speed**  
250 RPM  
**Temperature Range**  
-50°F - 400°F

## 7520 Model



The 7520 is built with durable materials and components to successfully manage **slurries or very abrasive applications.**

## 7550 Model

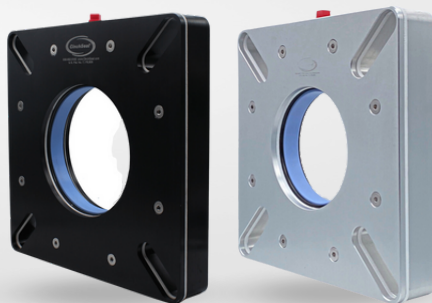


The 7550 model is more suitable for **powder applications.**





## Built for Large Equipment and Shafts up to 6.00"



The maintenance-free 7620 and 7650 series solid aluminum rotary shaft seals by CinchSeal are designed for larger shaft sizes ranging from 3.937" to 6.00". These seals are ideal for screw conveyors, bucket elevators, and other bulk handling equipment.

Suitable Materials	Equipment Compatibility	Specifications
Powders	Mixers	<b>Maximum Speed</b>
Metals	Conveyors	250 RPM
Slurries	Blenders	<b>Temperature Range</b>
Plastics	Cookers	-50°F - 400°F
Sludges	Agitators	
Food Processing	Rotating Equipment	

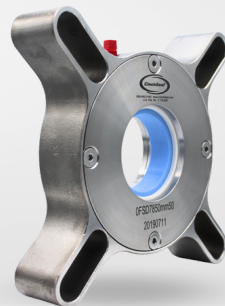
An exploded view diagram of a bolted joint assembly. The components shown from left to right are: a blue square flange with a central hole, a blue washer, a blue nut, a green O-ring, a blue washer, and a blue square flange with a central hole. Arrows indicate the assembly sequence, and the word "Elasto" is written below the O-ring, indicating its material property.

In the 7650 model, the aluminum housing and endplate are solid but the internal sealing parts are split so that the seal can be repaired without having to unbolt the seal housing.



## 7850 Model

### CEMA Stainless Steel Seal for High Sanitation Requirements



## About the Seal

The maintenance-free 7850 for screw conveyors and other bulk handling equipment is made out of Stainless Steel to handle dry and slurry products in the food service, pharmaceutical and chemical industries where stainless steel is a requirement for high sanitation needs.

#### Suitable Materials

Powders  
Metals  
Slurries  
Plastics  
Sludges  
Food Processing

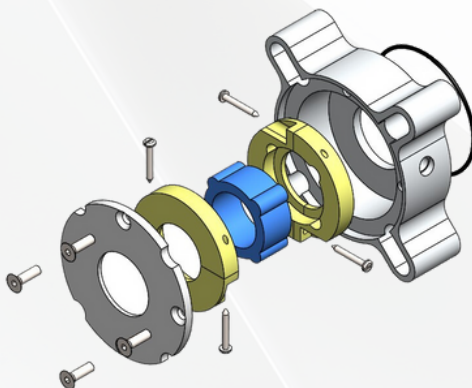
#### Equipment Compatibility

Mixers  
Conveyors  
Blenders  
Cookers  
Agitators  
Rotating Equipment

#### Specifications

**Maximum Speed**  
250 RPM

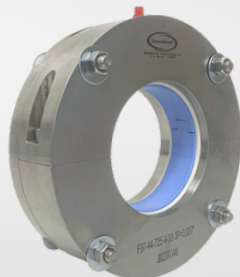
**Temperature Range**  
-50°F - 400°F





## 9700 Model

### Simple Maintenance Split Seal for High Sanitation Requirements



## About the Seal

The 9700 series hygienic rotary shaft seal for industrial mixers and blenders is machined out of **stainless steel**, and all internal parts meet FDA standards for indirect food contact. These split mechanical seals are recommended for industries such as food, cheese, spice, and flavorings manufacturing, as well as pharmaceutical and chemical, that require stainless steel parts to handle caustic wash downs and satisfy sanitary requirements.

#### Suitable Materials

- Powders
- Metals
- Slurries
- Plastics
- Sludges
- Food Processing

#### Equipment Compatibility

- Mixers
- Conveyors
- Blenders
- Cookers
- Agitators
- Rotating Equipment

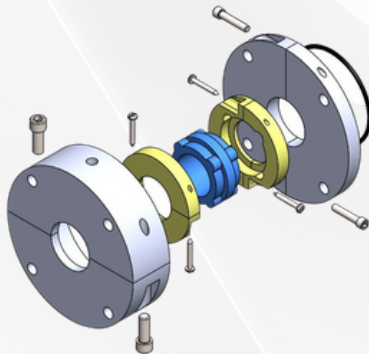
#### Specifications

##### Maximum Speed

250 RPM

##### Temperature Range

-50°F - 400°F





# Polypropylene Split Seals

**Economical Seal Built for High Sanitation Needs & Simple Cleaning**



## About the Seal

The Poly Split (PS) CEMA rotary shaft seal by CinchSeal is maintenance-free and designed to seal screw conveyors as well as mixing and blending equipment. It is manufactured from polypropylene and stainless steel to handle dry powders and slurries in the food, pharmaceutical, and chemical industries where stainless steel is required. Poly Split seals can be rebuilt with inexpensive repair kits and are designed to handle 1/4" total radial shaft runout.

### Suitable Materials

Powders  
Metals  
Slurries  
Plastics  
Sludges  
Food Processing

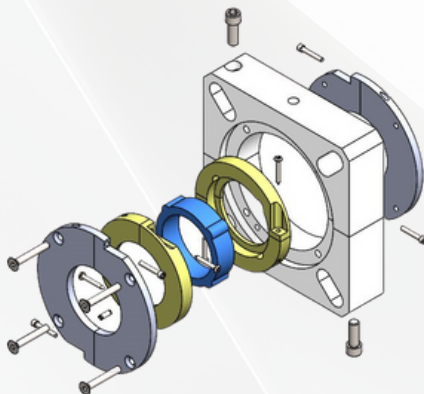
### Equipment Compatibility

Mixers  
Conveyors  
Blenders  
Cookers  
Agitators  
Rotating Equipment

### Specifications

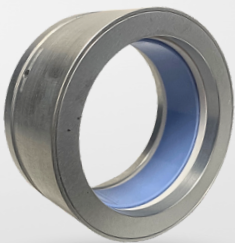
**Maximum Speed**  
250 RPM

**Temperature Range**  
-50°F - 400°F





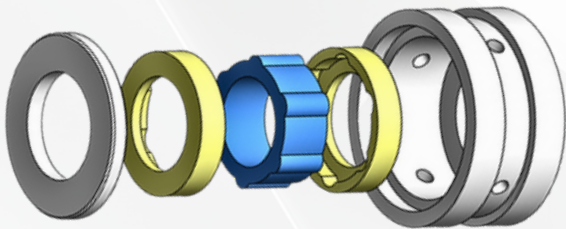
# Cartridge Seals



## About the Seal

Cartridge Seals are customized mechanical seals for rotary air locks in bulk handling equipment. They are designed to replace lip and packing seals in screw conveyors, specifically in the drive adapter plates from brands like Dodge and Falk. With temperature ranges up to 200°F / 93.3°C, our Cartridge Seals are a variation on the CinchSeal mixer seal that accommodates the drive end of screw conveyors.

Suitable Materials	Equipment Compatibility	Specifications
<ul style="list-style-type: none"><li>Powders</li><li>Metals</li><li>Slurries</li><li>Plastics</li><li>Sludges</li><li>Food Processing</li></ul>	<ul style="list-style-type: none"><li>Mixers</li><li>Conveyors</li><li>Blenders</li><li>Cookers</li><li>Agitators</li><li>Rotating Equipment</li></ul>	<p><b>Maximum Temperature</b></p> <p>Standard seal can withstand 200°F</p>







Our reach extends through continents and cultures, with CinchSeal headquarter located in the United State & CinchSeal Europe location in Germany. We have woven a network of partnerships and collaborations that stretch across borders, making our brand a familiar sight in cities and cyberspace alike. Our products and services are as diverse as the markets we serve, tailored to meet the needs of a varied and vast clientele.

**Find a US Representative**

**Find an International Representative**

